

Hurricane Tracking Map

www.FloridaDisaster.org





GET A PLAN! at www.FloridaDisaster.org

Atlantic Hurricane Season: June 1 - November 30

The Difference Between a Watch and a Warning

Tropical Storm Watch: Tropical storm conditions (sustained winds of 39 to 73 mph) are possible in the specified coastal area within 48 hours.

Tropical Storm Warning: Tropical storm conditions (sustained winds of 39 to 73 mph) are expected somewhere in the specified coastal area within 36 hours.

Hurricane Watch: Hurricane conditions are possible within the specified coastal area, but tropical storm force winds may reach the coast within 48 hours.

Hurricane Warning: Hurricane conditions are expected somewhere within the specified coastal area, but tropical storm force winds will arrive in less than 36 hours.

Hurricane Intensity Ratings

The Saffir-Simpson Hurricane Wind Scale is used to rate a hurricane's present intensity. This scale ranges from 1 to 5 and uses wind speed to estimate potential property damage from a hurricane landfall.

Tropical Storm:
Winds 39-73 mph

Damage is minimal, but scattered trees

and power lines may be damaged and brought down, resulting in some power outages.

Category 1 Hurricane:
Winds 74-95 mph

Porches and awnings may be damaged. Older homes may have roof damage. There may be more substantial damage to mobile homes and minor pier and boat damage. Unprotected windows may be broken by flying debris. Large tree branches may snap and shallow-rooted trees can be toppled. Heavy damage is possible to power lines. Low-lying coastal roads will become inundated with water.

Category 2 Hurricane:
Winds 96-110 mph

Some damage to building roofs, doors and windows with considerable damage to mobile homes. Failure of awnings and screened-in enclosures will be common. Some large trees may be blown down. Extensive power outages can be expected as well as coastal roads cut off by water. Major damage to piers and small boats could occur.

Category 3 Hurricane:
Winds 111-130 mph

Some structural damage to small homes is likely. Major damage is likely to coastal structures, with minor to

moderate damage possible for inland buildings. Nearly all mobile homes and older small homes could be destroyed. There will likely be major damage to large trees, fences and signs and extensive power loss. Serious coastal flooding is possible throughout the affected area.

Category 4 Hurricane:
131-155 mph

Total destruction of mobile homes will occur along with wall and roof structure failure on most small homes. Extensive damage is likely to doors, windows and roofing materials. Major damage or destruction of most coastal structures is possible. Severe damage will occur for inland structures and trees, shrubs, and signs may be blown down. Power outages may last for weeks or months. Major coastal erosion and flooding is possible.

Category 5 Hurricane:
Winds 156+

Complete roof failure on homes and industrial buildings. Some complete building failures with extensive shattering of windows and doors. All signage, fences and awnings will be destroyed. Nearly all trees will be snapped or uprooted. Extensive coastal flooding and erosion will occur and power outages may last months. Long-term water shortages are possible.



What is a Hurricane?



A hurricane is a low pressure system that generally forms in tropical waters. Hurricanes are often accompanied by powerful thunderstorms, heavy rain, strong winds, storm surge and tornadoes. Tropical systems are classified by wind speed in the following categories:

Tropical Depression: An organized system of clouds and thunderstorms with a defined center of circulation and maximum sustained winds of 38 mph or less.

Tropical Storm: An organized system of strong thunderstorms with a defined surface circulation and maximum winds of 39-73 mph.

Hurricane: An intense tropical weather system of strong thunderstorms with a well-defined circulation and maximum sustained winds of 74 mph or greater.

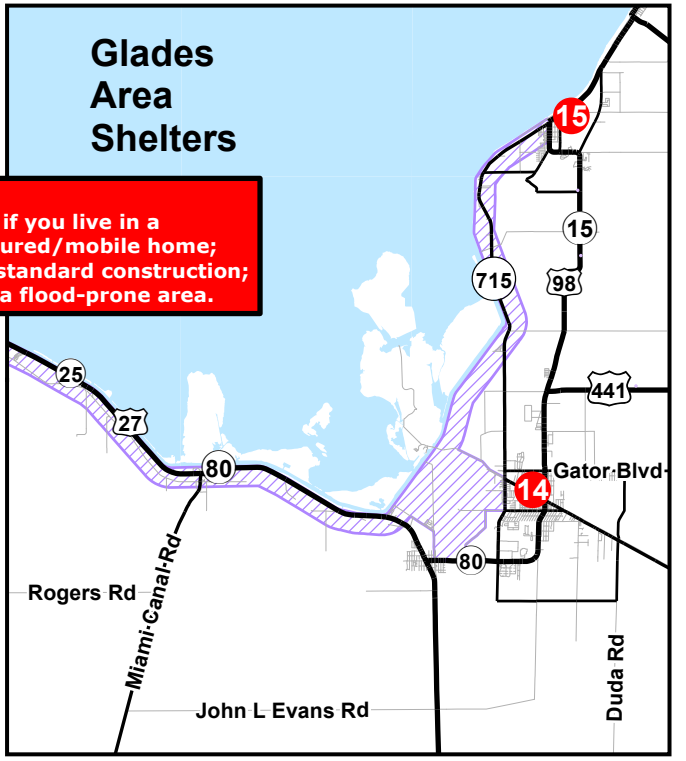
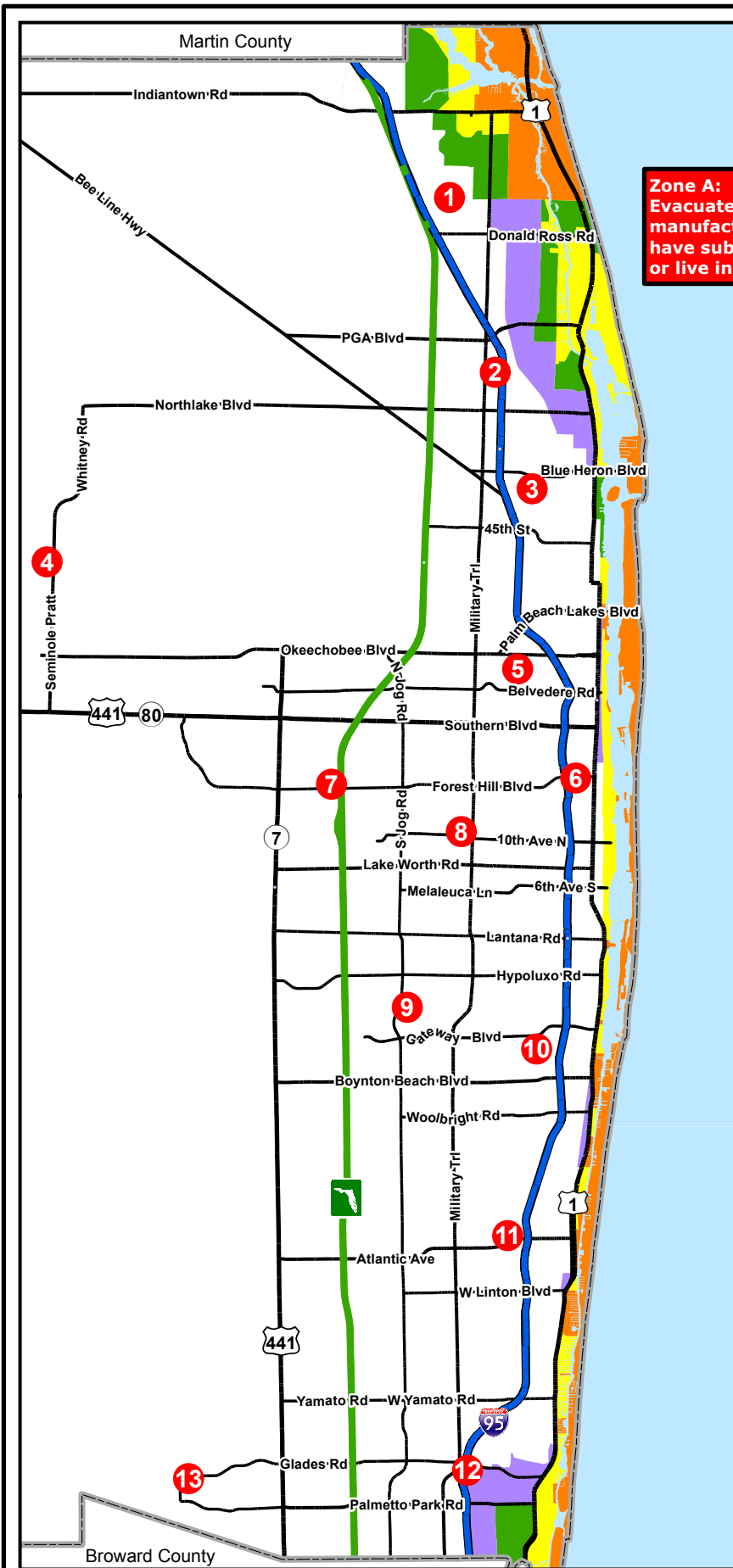


Get a Plan! Steps to Creating a Family Disaster Plan

- Buy a NOAA All-Hazards Weather Radio and test it weekly (Wednesdays, 10 a.m.-noon).
- Discuss the types of disasters that could affect the family.
- Determine if the home is located in a storm surge evacuation zone.
- Identify a safe room in your home or a neighbor's home.
- Plan escape routes from your home and places to meet.
- Know the location of a safe community shelter near your home.
- Have an out-of-state family member or friend you can stay with if necessary.
- Have an emergency plan for your pets.
- Post emergency telephone numbers by your phone and make sure children know how and when to call 9-1-1.
- Check your insurance coverage – flood damage is not usually covered by homeowners' insurance.
- Stock non-perishable emergency supplies and a disaster supply kit that should include:
 - A three-day supply of food and water, a change of clothing, a blanket or sleeping bag for each person and a first aid kit that includes medications.
 - Emergency tools: Battery-powered radio, flashlight and extra batteries, work gloves and a fire extinguisher.
 - Important family documents in a fire and waterproof container, an extra set of keys, credit card, and cash.
 - Replace batteries in your smoke detector and in your NOAA Weather Radio in the spring and fall when Daylight Saving Time changes.
 - Take first aid, CPR, and disaster preparedness classes through your local American Red Cross chapter.

Persons with disabilities often require additional assistance when preparing for a disaster. Here is a short list of tips for those with special needs:

- Establish a personal support network of friends, family or neighbors who can assist you and get you to a safe place.
- Place emergency instructions on the refrigerator that include information on your medications, dosage amounts, necessary equipment and emergency contacts.
- Register with local emergency management and fire departments
- Carry with you at all times emergency health information. A medical alert tag or bracelet to identify your disability can prove helpful.
- Keep a flashlight, bell or whistle nearby to signal your whereabouts to others.
- Have an extra supply of medication in your emergency kit.
- To create your online Family Disaster Plan, go to www.FloridaDisaster.org.


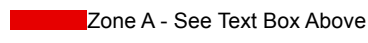







Zone A:
 Evacuate if you live in a
 manufactured/mobile home;
 have substandard construction;
 or live in a flood-prone area.

IMPORTANT: Not all shelters will be opened at the same time. Stay tuned to local TV and radio for shelter opening announcements.

1. Independence Middle School
4001 Greenway Dr, Jupiter 33458
2. Palm Beach Gardens High School
4245 Holly Dr, Palm Beach Gardens 33410
3. Dr Mary McLeod Bethune Elementary School
1501 Avenue U, Riviera Beach 33404
4. Seminole Ridge High School
4601 Seminole Pratt Whitney Rd, Loxahatchee 33470
5. West Gate Elementary School
1545 Loxahatchee Dr, West Palm Beach 33409
6. Forest Hill High School
6901 Parker Ave, West Palm Beach 33405
7. Palm Beach Central High School
8499 Forest Hill Blvd, Wellington 33411
8. John I Leonard High School
4701 10th Ave N, Greenacres 33463
9. Park Vista High School
7900 Jog Rd, Lake Worth 33467
10. Boynton Beach High School
4975 Park Ridge Blvd, Boynton Beach 33426
11. Atlantic Community High School
2455 W Atlantic Ave, Delray Beach 33445
12. Boca Raton High School
1501 NW 15th Ct, Boca Raton 33486
13. West Boca Raton High School
12811 Glades Rd, Boca Raton 33498
14. Lake Shore Middle School
425 W Canal St N, Belle Glade 33430
15. Pahokee Middle School
850 Larrimore Rd, Pahokee 33476

2018 Risk Shelters With Evacuation Zones

			
Shelter	Zone A - See Text Box Above	Zone C	Zone E
			
	Zone B	Zone D	Zone L

Disclaimer:
 "Legal: Palm Beach County is providing this data "as is," and Palm Beach County disclaims any and all warranties, whether expressed or implied, including (without limitation) any implied warranties of merchantability or fitness for a particular purpose. In no event will Palm Beach County be liable to you or any third party for any direct, indirect, incidental, consequential, special, or exemplary damages or lost profits resulting from any use or misuse of this data."



Palm Beach County
 GIS Service Bureau February 08, 2018

Food

Week 1

- 1 Gallon of water per person per day for at least 5 days, for drinking and sanitation
- Sandwich bread (*freeze until needed*)
- 3 Boxes of quick energy snacks (*i.e. granola bars or raisins*)
- 2 Cans of ready-to-eat-soup
- 1 Box of crackers
- Dry cereal
- 4 Cans of fruit
- 5 Cans of meat
- 4 Cans of vegetables
- 1 Jar of jelly or jam
- 1 Large can of juice
- Instant coffee/tea/powdered drinks



Water

Water will be needed for drinking, cooking, and bathing. Store enough bottled water for all members of your family and pets before the storm. Clean water that could be used for bathing & washing dishes is in your water heater.

Health & First Aid

Week 3

- 1 Bottle of shampoo
- 1 Box sanitary hand wipes/liquid
- 1 Large tube of toothpaste
- Antiseptic
- Deodorant
- Tweezers
- Adhesive bandages, assorted sizes
- Rolls of gauze or bandages
- Hydrogen peroxide
- First Aid book
- First Aid tape
- Petroleum jelly
- Rubbing alcohol

First Aid

During a storm, phone and electrical lines go down. Dangerous weather conditions prevent emergency vehicles from responding to emergency situations. Preparing yourself and your family with CPR and First Aid training can save the life of a loved one.



Storage

Week 2

- 2 Boxes of large plastic zip bags
- Plastic wrap
- 2 Rolls of aluminum foil
- Assorted plastic containers with lids
- 3 Boxes heavy-duty garbage bags
- Waterproof portable plastic container with lid

Preserving Food & Important Documents

Electrical power can be off for several days after a storm, so plan for power outages. Also, use waterproof containers to protect important papers.



Cleaning & Supplies

Week 4

- 2 Packages of eating utensils, paper cups, paper plates
- Facial tissues (*i.e. Kleenex*)
- 2 Rolls of paper towels
- 4 Rolls of toilet paper
- Liquid dish soap
- Mosquito repellent
- Matches
- 2 Pairs of latex gloves
- Broom, mop, and bucket
- Unscented liquid bleach

Use What You Have

Stock up on personal care and cleaning items. Check your supplies now to make sure you have these supplies on hand. Don't forget disposable plates, cups and utensils, paper towels, and toilet paper. Insect repellent and sunscreen should be included. If you have an adequate supply on hand, you will not need to purchase them when you go shopping.



Palm Beach County
Public Safety Department
Division of Emergency Management

www.pbcgov.com/dem



Palm Beach County
Board of County Commissioners

In accordance with the provisions of the ADA, this brochure can be made available in an alternate format. Contact Emergency Management at (561) 712-6400.

Rev. 06/14

TO DO LIST Before the Season Starts

- Make a family plan. Who does what and where will your family ride out the storm
- Locate your water meter and electrical shutoff
- Know the disaster plan of your child's school or daycare
- Trim trees and store loose objects
- Install/test your smoke detector
- Use a video camera to tape the contents of your home and store videotape with a friend who lives out of town
- Photocopy important papers and store safely
- Make plans to board your pet if you plan to go to a shelter
- Obtain cash or travelers checks
- Establish an out-of-state contact to call in case of emergency



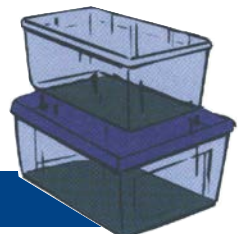
Emergency Supply Kit Shopping List

Everyone needs to prepare for emergency situations, but shopping for supplies can be expensive and strenuous. Shopping for items a little at a time before an event, can reduce the stress of recovery by avoiding long lines and empty shelves.

**Get a Head Start
& Be Prepared!**

Keep in a Waterproof Portable Container

- Will, insurance policies, contracts, deeds, stocks, and bonds
- Passports, social security cards, immunization records
- Bank account numbers
- Credit card account numbers and companies
- Inventory of valuable household goods, important telephone numbers
- Family records (*birth, marriage, death certificates*)



Medications

Week 5

- Extra supply prescription medication(s)
- Aspirin and/or acetaminophen
- Anti-diarrhea medicine
- Adult vitamins
- Thermometer



Special Needs Shelter

The county Special Needs Shelter only accepts residents with a physical condition requiring medical or nursing care that cannot be provided for in a general population shelter. Individuals must be able to sleep safely on a cot or mat and meet one of the following criteria:

- **Need nursing assistance with medications or medical care administration**
- **Monitoring vital signs or medical conditions or activities of daily living but do not need hospitalization**
- **Need constant electrical power for medical equipment**

Pre-registration is required for individuals needing to use the Special Needs Shelter.

To register call: (561) 712-6400

Common Tools

Week 6

- Battery operated radio
- Flashlights
- Flashlight batteries
- Assorted safety pins
- Scissors
- Screwdrivers
- Pliers
- Vise grips
- Hammer(s)
- Heavy-work gloves
- Stove fuel/charcoal, lighter fluid
- Camping or utility knife
- 1 Box disposable dust mask
- Plastic safety goggles



Tune In

Local media are your primary source of information during disaster. They work with the Emergency Operation Center to provide up-to-date information that can keep you safe. Be sure to have a battery-operated radio and stock up on plenty of batteries. Stay informed about weather conditions, hazards, closed roads, curfews, and relief center locations.

Heavy Tools

Week 7

- Plywood & fasteners to cover windows
- Tarpaulin, canvas for temporary roof repair
- Handsaw and/or chain saw & fuel
- Assorted nails
- Wood screws
- Hatchet
- Crowbar



Safety

Most hurricane related injuries occur after the storm when people are cleaning up debris. Wear proper safety gear, make sure you know how to properly use power tools and machinery and never work alone. It may be best to hire skilled and insured professionals to do some work.

Smart Supplies

Week 9

- Batteries for camping lantern
- Battery powered camping lantern
- Portable camp stove or grill
- Video or disposable camera

Your Property

Before hurricane season, make a complete inventory of your valuables and personal property. Store important documents and valuables in a safe dry place. If you evacuate, take them with you if you can. Take a photo inventory before the storm and then take photos of any damage after the storm and then take photos of any damage after the storm for your insurance adjuster. Be sure that you are properly insured and understand all of the conditions of your policy prior to a disaster. This will save you from unfortunate surprises during recovery.



Helpful Supplies

Week 10

- Games/activities for kids/family
- Extra radio batteries
- Local and state road maps
- Gas cans
- Manual can opener

Have Patience

Damage after a hurricane is unpredictable. It can take several days, and in some cases, several weeks to restore power. Crews will begin work as soon as they can to clear roads and restore services. Be patient. Plan for loss of power, phones, water, and cable television. Have activities on hand for your family. Remember that everyone in the community is experiencing the same disaster. **DO NOT HOARD FUEL.**

Work together and help your neighbor.



Everyday Safety

Week 11

- ABC certified fire extinguisher
- Smoke detector with battery
- Carbon monoxide detector

Everyday Supplies

Disasters can happen without warning. It is a good idea to have disaster supplies on hand year-round. Make sure you always have a working fire extinguisher, smoke detectors, and a carbon monoxide detector. These items save lives and reduce property damage. To reduce risk of fire, **DO NOT USE CANDLES.** Never use a generator or charcoal grill inside your home or inside your garage.



Special Items

Week 8

- Special foods for special diets
- Extra hearing aid batteries
- Items for denture care
- Spare eyeglasses or contact lens supplies
- 1 Gallon of water per pet
- Leash or pet carrier
- Pet food
- Baby food
- Diapers
- Baby wipes



What You Need

Only you know what you need. Some families will need special items added to their disaster list. These include baby food and baby care items as well as items for your pet. Make sure you have spare batteries for your hearing aid and a spare pair of eyeglasses. **Remember pets are not allowed in general shelters.** If you live in an evacuation zone, **pets can be pre-registered for the Pet Friendly Shelter** by calling (561) 233-1266.

pbcgov.com/publicsafety/animalcare



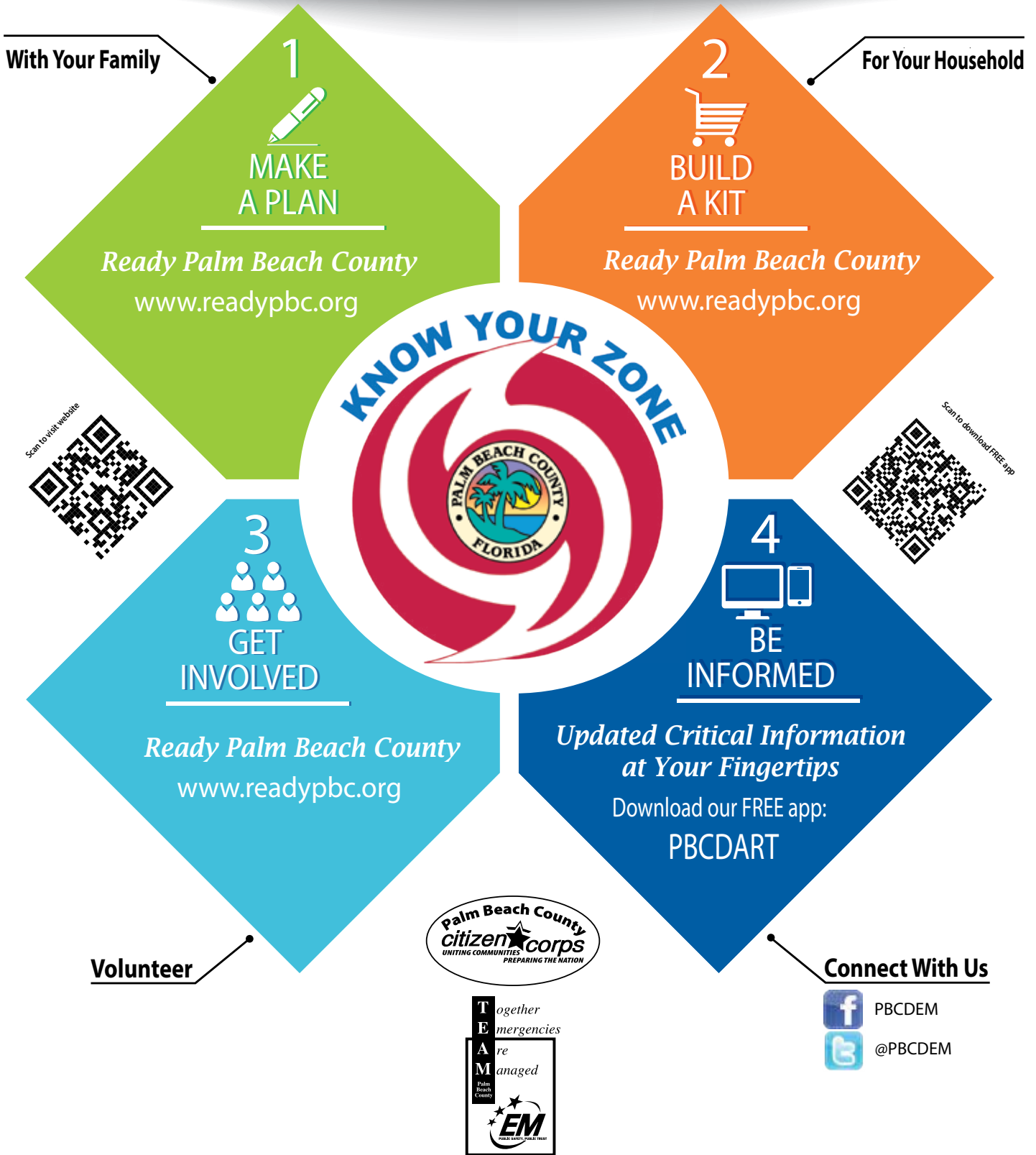
Palm Beach County
Public Safety Department
Division of Emergency Management

www.ReadyPBC.org

Palm Beach County
Public Affairs Department

www.pbcgov.com

ARE YOU DISASTER READY PALM BEACH COUNTY?



www.ReadyPBC.org

ALERTPBC

Palm Beach County's Emergency Notification System



WHAT IS ALERTPBC?

ALERTPBC is Palm Beach County's Emergency Notification System that allows you to opt in to receive notifications via **phone calls, text messaging, e-mail and more** based on locations you care about.

WHEN WILL IT BE USED?

This system will be used to notify you about **imminent threats to health and safety** as well as informational notifications that affect your locations or work environments. Administrators will send notifications regarding:



severe weather



flooding



gas leaks



police activity

and more

However, signing up for ALERTPBC does not guarantee you will receive notice of all public safety issues and concerns.

SIGN UP FOR NOTIFICATIONS

Go to www.readypbcc.com to create a profile and add your contact and location information. All information provided will be kept strictly confidential.

ALERTPBC offers two types of notifications: **weather** and **county/city alerts**.

You can stop receiving notifications at any time by removing your contact information from your profile.

SIGN UP AT WWW.READYPBC.COM



Palm Beach County
Board of County Commissioners
Public Safety Department
Emergency Management Division
www.readypbcc.com





Palm Beach County Special Needs Shelter

- › **Do you depend on electric medical devices to stay well?**
- › **Do you depend on supplemental oxygen at least part of the day?**
- › **Do you have a chronic but stable illness that requires professional observation, or have a full-time caregiver?**
- › **Do you have progressive Alzheimer's or Dementia?**

The best place to be during a disaster is somewhere safe and comfortable, so plan to shelter at home.

If you live in an *evacuation zone*, plan to travel a few **minutes** or a few **miles** away from the danger if ordered to evacuate.

The Special Needs Shelter is available as a last resort when no other options remain.

›› **Shelter admission is limited, and based on need. Transportation may be requested.**

Applications for the Special Needs Shelter are accepted electronically at **www.ReadyPBC.com** by phone, or mail:

**Special Needs Shelter Coordinator
Palm Beach County Emergency Management
20 South Military Trail
West Palm Beach, FL 33415**

Tel (561) 712-6400 | Fax (561) 712-6464

Make sure your family has a plan in case of an emergency. Before an emergency happens, sit down together and decide how you will get in contact with each other, where you will go, and what you will do in an emergency. The information below will help you fill out your Family Emergency Plan on the next page.



Out-of-Town Contact

Choose someone to call if your family is separated in an emergency. Learn their phone number, and know when to call them. Tell your contact where you are so your family can find you right away.



Family Meeting Place

Choose a meeting place right outside your home in case of a sudden emergency, like a fire. Disasters can also happen when your family is not together. Choose a regional meeting place outside your neighborhood in case you cannot go home.



Disaster Supply Kit

Your family should have a Disaster Supply Kit to take with you in a hurry. Start by creating your Family Emergency Plan. Then collect basic supplies, (food, water, and first aid kit) to last your family at least 3 days. Don't forget important papers and supplies for your pet.



Personal Medical Info

Write down any medical information about each family member such as medications, allergies, or ongoing health problems. This information could save their life in an emergency.



Medical Providers

Collect the names and phone numbers of any doctors, dentists, pharmacies, or veterinarians that your family uses.



Personal Information

The names, birth dates, and social security numbers of each family member are important to have in case of emergency.



Medical Supplies

Make sure you have medical supplies such as oxygen tanks, extra batteries for wheelchairs, and, of course, medication for any family member who may need it.



School Information

Include the names, addresses, and phone numbers of schools or daycare providers where some of your family might be.



Work Information

Include the names, addresses, and phone numbers of the businesses where any family member might work.



Insurance Policy Information

Health insurance, homeowners or renters insurance, and car insurance policy information might all be important to have in an emergency.

Hey, kids, get together with your family to make your emergency plan today!



Fill out the information form below with your family. Keep this form with your Disaster Supply Kit or another safe place where you can access it in the event of an emergency.



Neighborhood Meeting Place _____



Regional Meeting Place _____
Address _____ Phone Number _____



Out of Town Contact _____
Address _____ Phone Number _____



Family Member _____ Social Security Number _____
Phone _____ Date of Birth _____



Medical Information _____



Family Member _____ Social Security Number _____
Phone _____ Date of Birth _____



Medical Information _____



Family Member _____ Social Security Number _____
Phone _____ Date of Birth _____



Medical Information _____



Family Member _____ Social Security Number _____
Phone _____ Date of Birth _____



Medical Information _____

Write down where your family spends most of their time: work places, school, daycare, parks, shopping malls. You should have an emergency plan for when family members are at any of these locations.



Location 1 _____ Address _____
Phone # _____ Evacuation place _____



Location 2 _____ Address _____
Phone # _____ Evacuation place _____

Important Information

Name

Phone Number

Other Information



Doctor



Pharmacy



Vet/Kennel for Pets



Home Insurance

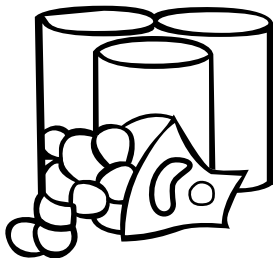
Other

**GET A
PLAN!**
KidsGetAPlan.com

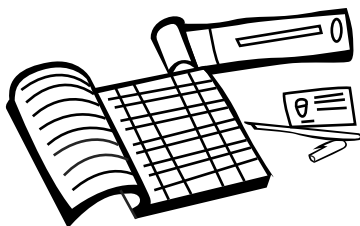
Your
DISASTER
Supply Kit



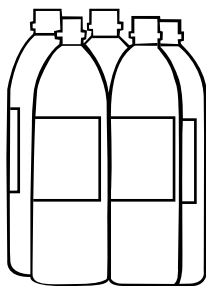
First Aid Kit



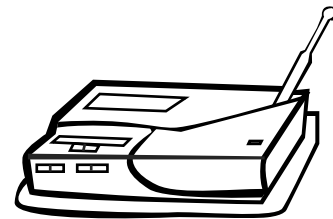
Canned Food & Snacks



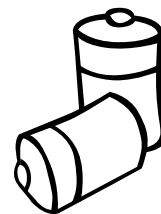
Important Papers



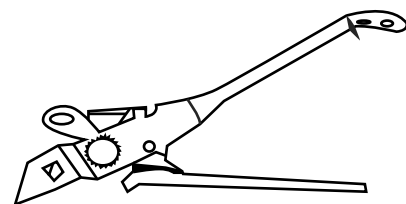
Water



All-Hazards
Weather Radio



Batteries



Can Opener



Flashlight

Here are the most important items you should have in your disaster supply kit. Build your complete kit at www.KidsGetAPlan.com!

What to Bring to the Storm/Disaster Shelter

BABY FOOD	H Z M G O I L P K C D R Z V N I Q K C B
BATTERIES	T D T Q O I O G K A R C J L E B G P B C
BLANKET	H O D H L P D B L A N K E T C A R V X H
BOOKS	G O U A I R M A T T R E S S T T F H U A
CELLPHONE	I F D I A G N I R A E H N O G T L A V R
CHARGERS	L Y Q R W B E A Y I U N I B N E X H R G
COTS	H B R I F Q A M U K T L K I P R W R S E
EYEGLASSES	S A G A B G N I P E E L S C L I L P K R
FLASHLIGHT	A B E H A O R Q C T P K J T Y E H R O S
FOLDING CHAIR	L Q Y C X Y P H R E C A F K X S Q E O X
MEDICAL RECORDS	F U E G M E D I C A L R E C O R D S B B
PILLOW	R I G N M K E X N X O L J H Y S H C B U
PRESCRIPTIONS	C E L I Q S I S W Z D W P P S N J R O Y
QUIET GAMES	A T A D V M K Y T W W A O H B N F I C H
RADIO	I G S L U M L H A I Y C Y L O Q R P R H
SLEEPING BAG	R A S O T O O T H B R U S H L N Y T M I
SNACKS	E M E F M J E C K E C X T O K I E I G W
TOILETRIES	O E S Q E R M K T O N A T S X X P O B A
TOOTHBRUSH	J S D Y Y X A Z T N T W L F V M T N U U
WATER	G I N O N Q C S U H A K M E W W Q S Q M

2018 Atlantic Storm Names

ALBERTO	K Y L G H G Y N L C N L L V P S G B L T
BERYL	J L P J J G N Y V K K L D Y J D I E U M
CHRIS	L P T A C Q L P N V W O X M U P D R Z N
DEBBY	G L N E T T Q R E E I S E H V K V Y A E
ERNESTO	L E A H C I M X R C P N L Q M Y X L I Q
FLORENCE	V A M T O N Y N D Y Y N H E H D B R V D
GORDON	Y F Z L H O E E J W M O X P S E E Q D W
HELENE	E A Q V D S B R I I T G J H R L C M Q K
ISAAC	D R Q O T Y V C O L Z U Y T A A I G J Y
JOYCE	M D H O I A K G V L F R O V H E L E N E
KIRK	S Z S L D O G I N I F B V P H N N K Z O
LESLIE	P A I W N S G I F A D M A S K O D X V R
MICHAEL	P A R R F F G Y Q M P T Y E D L H V A A
NADINE	A P H A Q X I Y V I T A X R O E H M Q C
OSCAR	I H C X S G P Y M Y H N O S N F W G Q S
PATTY	Q P M V X O Z D L C M G C I Y E O W K O
RAFAEL	E W T R I N E N A A H W D H K T A S F O
SARA	T L R M S B Z U R A E A U I I R H C Y H
TONY	P C Q H B Z B W O S N E R D I Y X C W I
VALERIE	E Z V Y L K B U C I V K A P K P W Z I Z
WILLIAM	

Tropical Storm Season Terms

CENTER	H F H N A Z S S T O R M S U R G E P W A
CYCLONE	N D U D N H M R N S D O O L F H S A L F
DAMAGE	Z A N H Y U H V S N D D X U H Z Z V V E
DIRECT HIT	X T T U R R V Y C J O U T F L O W D G J
FLASH FLOODS	J U L Q O R L I G H T N I N G J R C Q F
GALE WARNING	Q O D A G I T R O P I C A L S T O R M H
HURRICANE	G P W G E C X E T N D P D M L D E G U V
HURRICANE WATCH	Q S E S T A I X O D N Y L U H T N R S S
LANDFALL	H R H N A N G L R A C L N E N P R F N E
LIGHTNING	Y E T D C E J C N M R V T E R I W L W V
PRESSURE	M T H R M W W G A A A A C E C I Q E C E
RAIN	S A U I I A A C D G I I S A N Q C Q L R
SEVERE WEATHER	K W N V W T Y Q O E N S N D U S M M A E
STORM SURGE	J Q D X T C A F J C U E S H F W Y V N W
THUNDER	V H E S L H X A V R T P A G C S G J D E
TORNADO	P K R O L F Q S E W E T V P H L T E F A
TROPICAL STORM	N R N S W D G A L E W A R N I N G N A T
WATERSPOUT	A E Z A G H H X D L K Y L Y F N M Z L H
WIND SPEED	Y K Z C R I E V M T I H T C E R I D L E
	N N Z O L Z Z N J E R O F I N Q D U F R

Answers next page.



Hurricane Season is upon us!

Hurricane Preparedness Tips from the Solid Waste Authority of Palm Beach County:

Do your part now.

Cut back your trees and shrubs before a storm threatens.

Place vegetation trimmings at the curb on their specific collection day.






Trim early! Follow 6/50 rule: Only 6-cubic yards 6 ft in length/50 lbs! at curb!

*Remember, smaller vegetation, like leaves and pine needles, must be placed in bags/cans weighing less than 50 lbs.

www.SWA.org/Hurricane   



The Solid Waste Authority needs your help to clean up!



Pile 1 - garbage and recyclables



Pile 2 - yard waste



Pile 3 - storm debris

By keeping these three piles separate and away from power lines, fire hydrants and mailboxes, you will help speed our recovery!



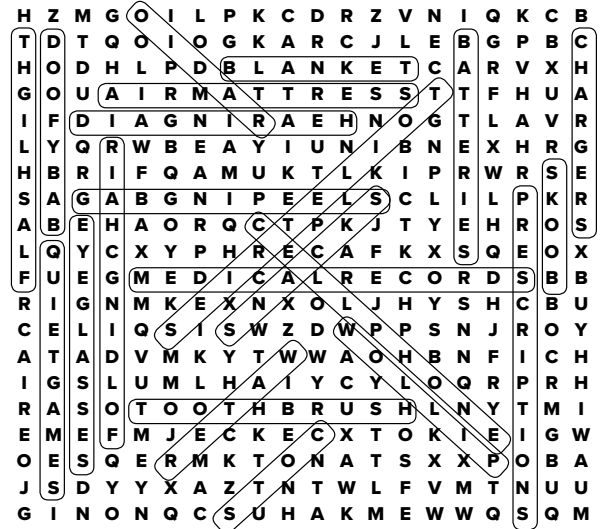
SWA.org/Hurricane

IMPORTANT PHONE NUMBERS

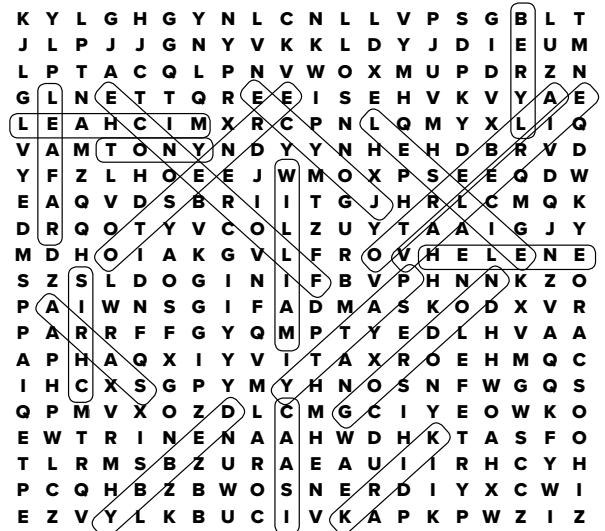
Emergency	911
Public Safety	(561) 712-6400
TDD (Hearing Impaired)	(561) 712-6343
Senior Helpline	211
Animal Care & Control	(561) 233-1200
American Red Cross	(561) 833-7711
Code Enforcement	(561) 233-5500
Consumer Affairs	(561) 712-6600
Consumer Assistance Hotline	(800) 227-8676
Contractor Certification	(561) 233-5525
Engineering & Public Works	(561) 684-4000
FEMA	(800) 621-3362
Fire Rescue – Non-Emergency	(561) 712-6550
Insurance Commissioner	(561) 681-6392
FPL Power Outages	(561) 697-8000
Health Department	(561) 840-4500
Palm Tran	(561) 841-4200
Palm Tran Connection	(561) 649-9838
Parks and Recreation	(561) 966-6600
Price Gouging Hotline	(866) 966-7226
Public Affairs Department	(561) 355-2754
Roads, Drainage, Traffic	(561) 684-4018
Salvation Army	(561) 686-3530
Sheriff (PBSO) – Non-Emergency	(561) 688-3000
Solid Waste Authority	(561) 640-4000
Traffic Signal Repair	(561) 683-6885
United Way	(561) 375-6600
*PBC Water Utilities	(561) 493-6000
Emergency Repairs 24 hrs	(561) 740-4600 opt 1

*Check your water bill to determine who provides your water.

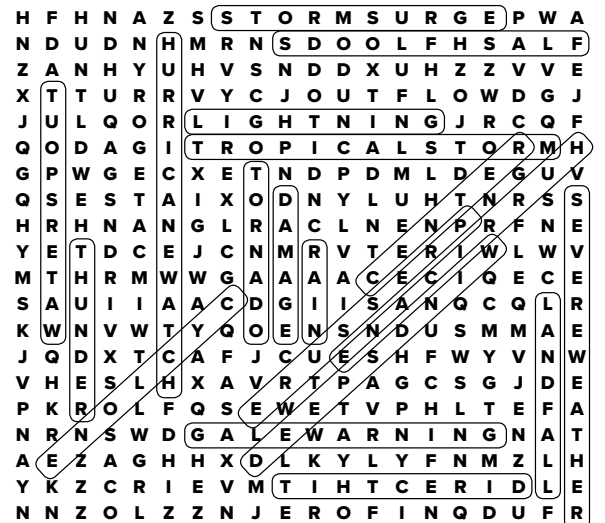
Answers to “What to Bring to the Storm Disaster Shelter” Puzzle:



Answers to “2018 Atlantic Storm Names” Puzzle:



Answers to “Tropical Storm Season Terms” Puzzle:





RECYCLE
Hurricane Supplies



Fuel and Used Oil



Propane Tanks



Rechargeable Batteries

Find free drop-offs at
SWA.org/HCRC





SWA
SOLID WASTE AUTHORITY
of Palm Beach County

*PBC Residential disposal only. For commercial disposal, call (561) 687-1100.