

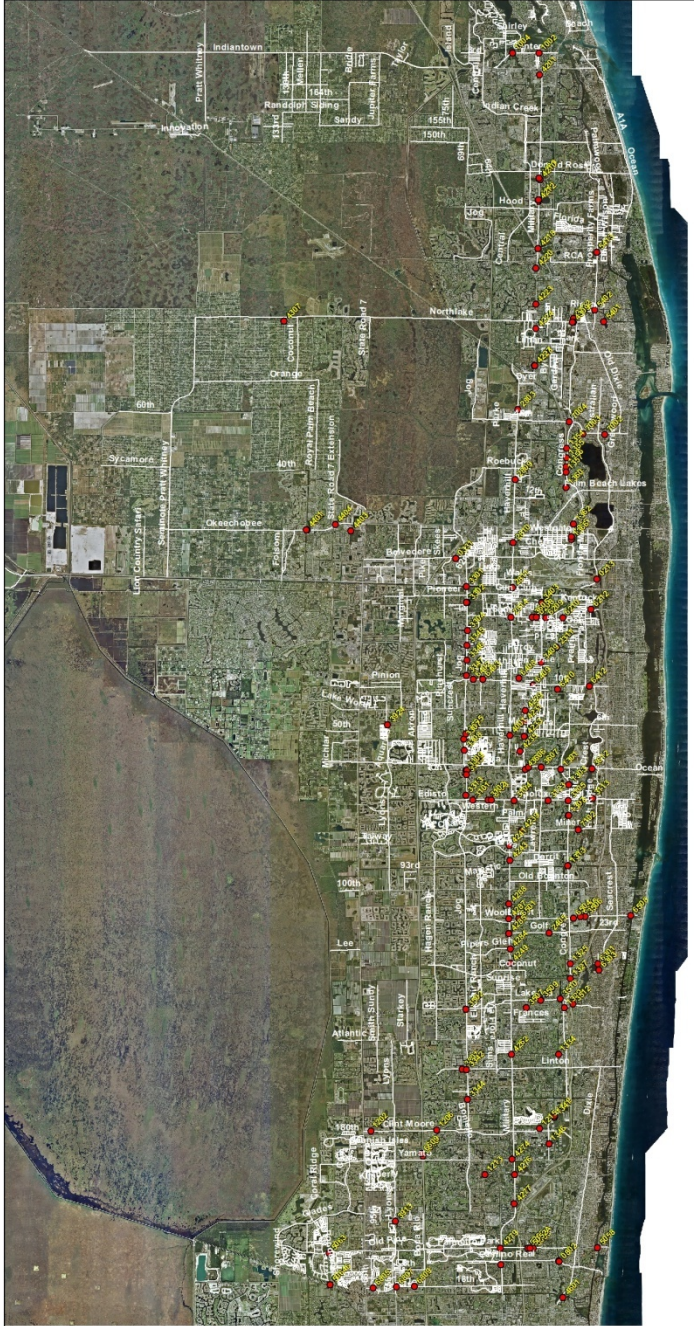
**The Palm Beach County
National Pollutant Discharge
Elimination System (NPDES)
Municipal Separate Storm
Sewer System (MS4) Program**

NPDES MS4 History

- 1987 Clean Water Act reauthorization
- Published in the CFR 1990
- First 5 year Permit issued 1997 by EPA
- 40 Co-Permittees in the group permit
- Delegated to DEP in 2000
- Currently in the 3rd 5 year Permit cycle

MS4 Permit Elements

- Structural Controls and Stormwater Collection Systems Operation
- Areas of New Development and Significant Redevelopment
- Roadways
- Flood Control Projects
- Municipal Waste Treatment, Storage, and Disposal Facilities
- Pesticides, Herbicides, and Fertilizer Application
- Illicit Discharges and Improper Disposal
- Industrial and High-Risk Runoff
- Construction Site Runoff



Palm Beach County
 Department of
 Environmental
 Resources
 Management

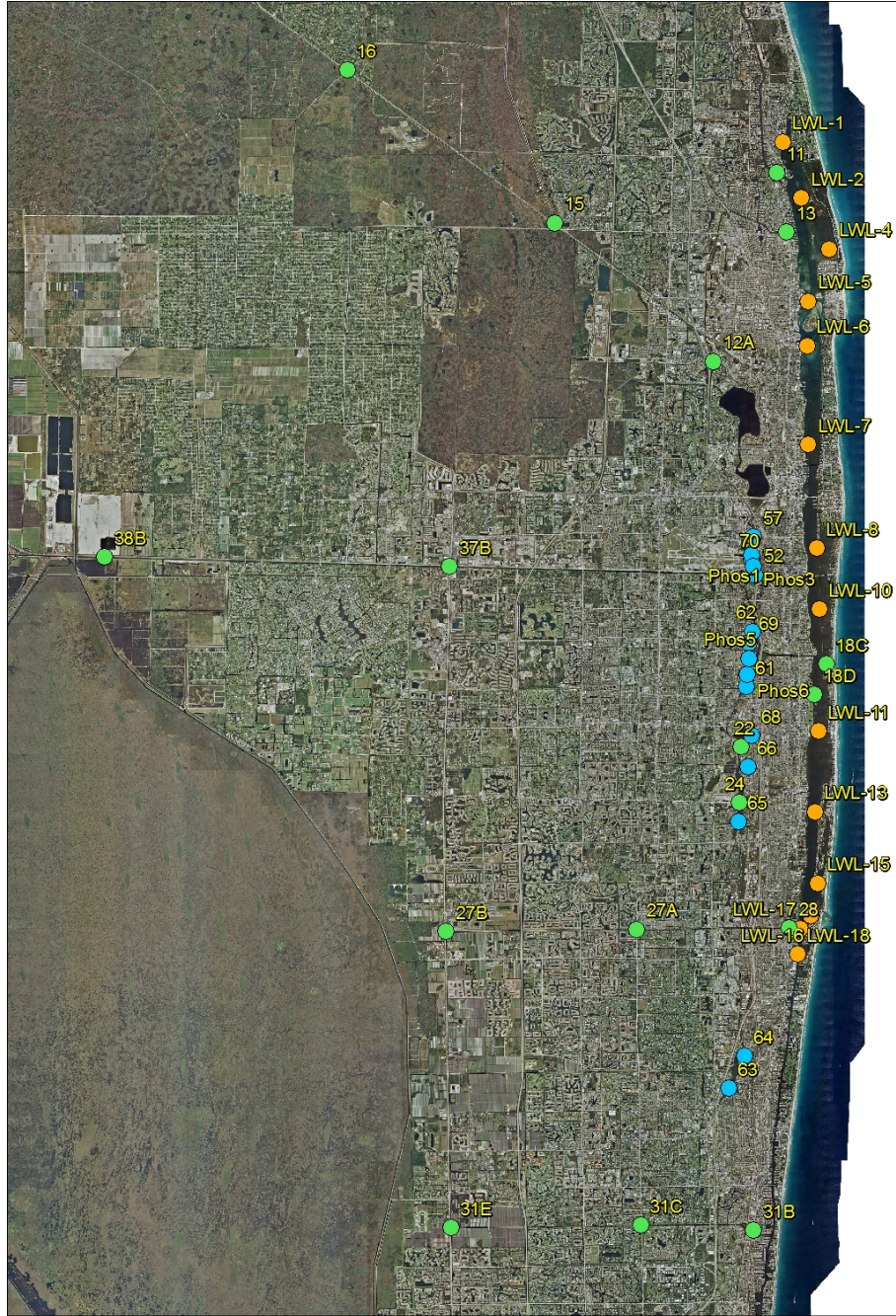
PBC Maintained Roads and Outfalls

All County

Created: 4/5/2012 A.Studt
 Note: This map is not official and is intended for presentation purposes only.

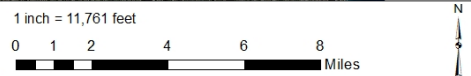
1 inch = 15,262 feet





Active PBC-ERM Water Quality Monitoring Locations

Created: 4-8-2019 A. Stolt
Note: This map is not official and is intended for presentation purposes only.



Questions and Answers

